

FIG. 1
CABLE EXTENDED

CABLE TO VALVE MOUNTING INSTRUCTIONS

1. PLACE CABLE THROUGH HOLE IN FRAME RAIL AND INSTALL 5/8 JAM NUT. LIGHTLY TIGHTEN 5/8 JAM NUT AGAINST FRAME. DO NOT OVER TIGHTEN!
2. PLACE 1/4-28 NUT AND CLEVIS ON END OF CABLE. INSURE CLEVIS IS SCREWED ON A MINIMUM OF 1/4".
3. OPERATE CABLE AND VALVE HANDLE FULL TRAVEL IN ONE DIRECTION.
4. ADJUST CABLE CLEVIS AND/OR CABLE THROUGH FRAME TO SET HOLE IN CLEVIS PAST HOLE IN VALVE HANDLE.
5. OPERATE CABLE AND VALVE HANDLE IN OPPOSITE DIRECTION AND AND CHECK ALIGNMENT OF HOLES. ADJUST IF NECESSARY.
6. RECHECK HOLE POSITION IN ORIGINAL DIRECTION. MAKE ADJUSTMENTS AS NECESSARY TO ATTAIN HOLE POSITIONS AS SHOWN IN FIG 1 AND FIG 2.

PROPRIETARY AND CONFIDENTIAL
THE INFORMATION CONTAINED IN THIS
DRAWING IS THE SOLE PROPERTY OF TRIPLE
C INC. ANY REPRODUCTION IN PART OR
AS A WHOLE WITHOUT THE WRITTEN
PERMISSION OF TRIPLE C INC. IS PROHIBITED.

REV.	DESCRIPTION	DATE	APPROVED
A	UPDATED TO NEW STANDARD DWG # 10-1901	2/20/2013	
B	UPDATED TO NEW STANDARD DWG FROM 10-0906	4/5/2013	
C	UPDATED TO SHOW HUSCO VAVLE	3/28/2014	

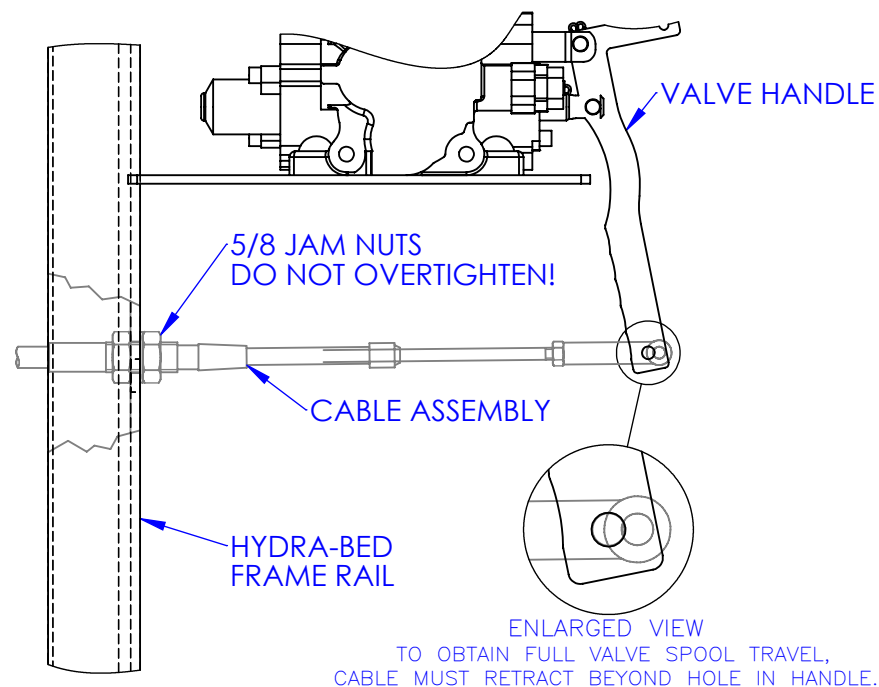
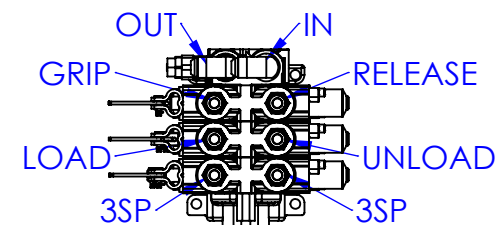
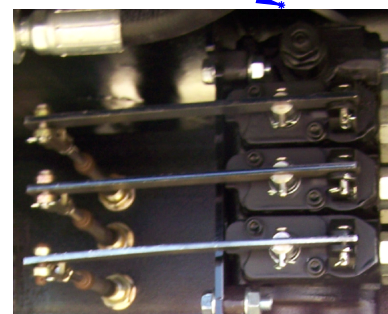


FIG. 2
CABLE RETRACTED

PRESSURE
RELIEF



P.O. BOX 248,
SABETHA, KS 66534

TRIPLE C
INC.

DIMENSIONS ARE IN INCHES TOLERANCES: FRACTIONAL $\pm 1/16$ ANGULAR: MACH ± 1 BEND \pm TWO PLACE DECIMAL ± 010 THREE PLACE DECIMAL ± 005		NAME	DATE
DRAWN		HEATH	3/28/2014
PART #			
ASM #			
COMMENTS:		HUSCO CABLE INSTALLATION INSTRUCTIONS	
MATERIAL		DO NOT SCALE DRAWING	

SIZE A	DWG. NO. 10-0973-07 C	REV. C
SCALE: 1:1	WEIGHT: --	SHEET 1 OF 1